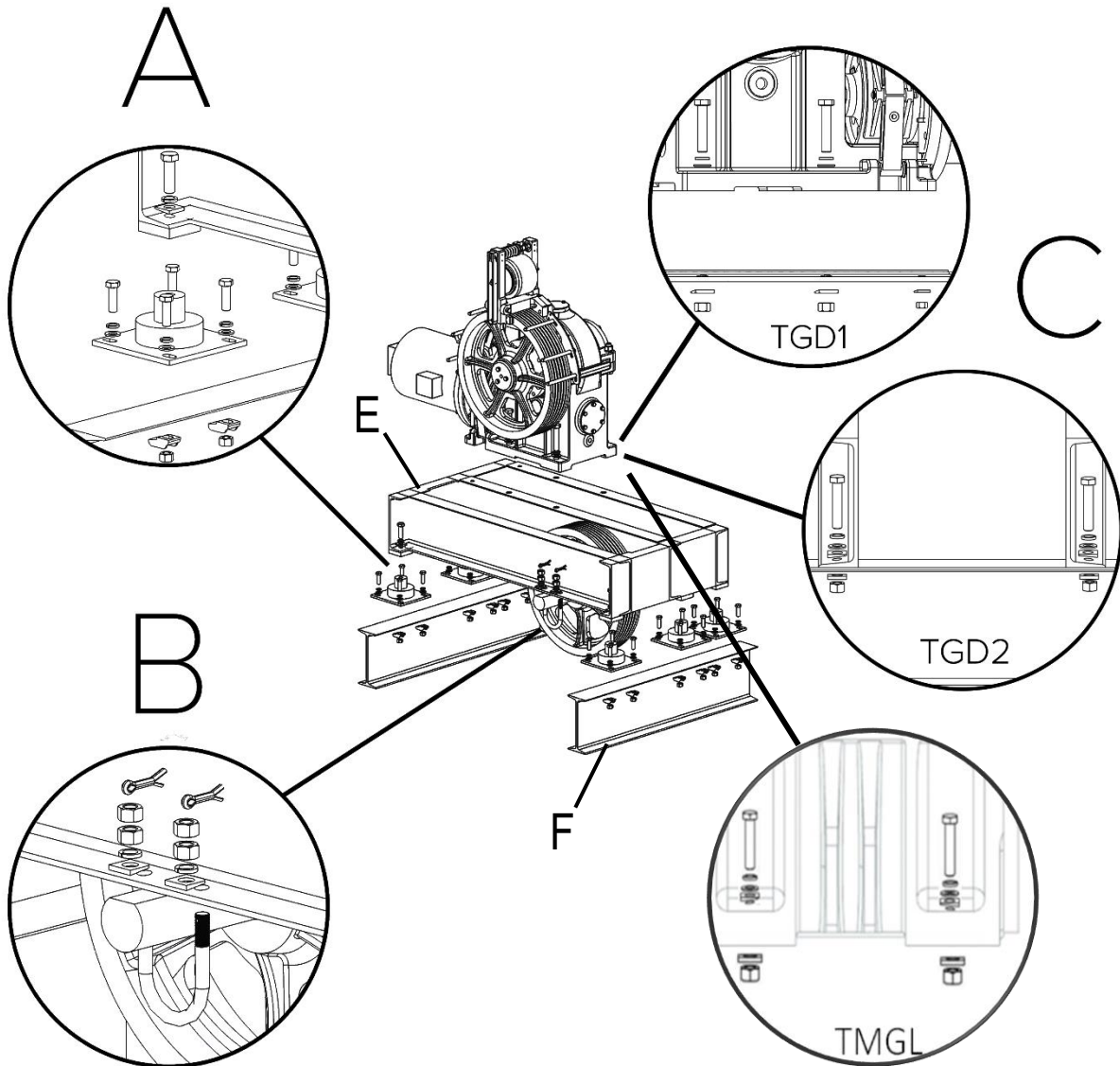


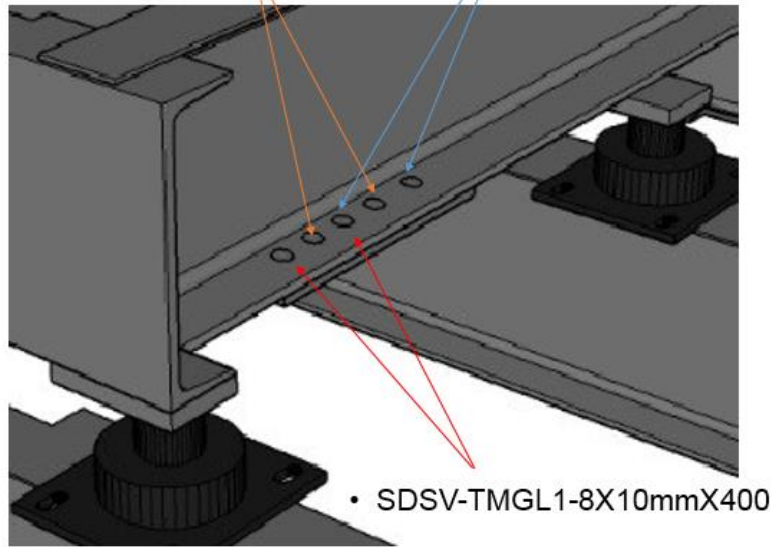
## STANDARD BEDPLATE ASSEMBLY INSTRUCTION



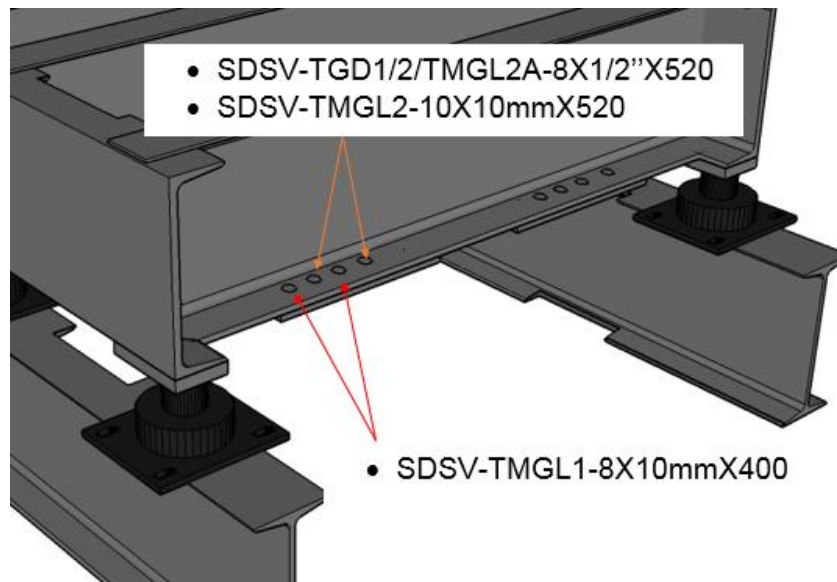
1. Position blocking beams (F) over machine beams (not shown).
2. Attach Isolation Pads (A) to blocking beams and bedplate (E) using fasteners shown.
3. Attach deflector sheave (B) to bedplate.
4. Attach machine (C) to bedplate according to machine type.

## STANDARD DEFLECTOR SHEAVE (SDVS) MOUNTING HOLE DETAIL

- SBLT-Long-TGD/TMGL – STANDARD BEDPLATE, LONG
- SBLT-Short-TGD – STANDARD BEDPLATE, SHORT
- SDSV-TGD1/2-TMGL2A-8X1/2"X520
- SDSV-TMGL2-10X10mmX520
- SDSV-TGD1/2-6X5/8"X640
- SDSV-TMGL1-8X10mmX400



- SBLT-Short-TMGL



## SBLT-LONG-TGD/TMGL HARDWARE LIST

Hardware Package Set	#	Item	Quantity		
<b>Hardware (Isolation Pads to Blocking Beam &amp; Isolation Pads to Big Bedplate)</b>					
			9 Isolation Pads		
A (Bedplate Crate)	1	Nut M16	36		
	2	Spring Washer 16	36		
	3	Flat Washer 10	36		
	4	Bolt M16X50	36		
	5	Compress Plate	36		
	6	Bolt M20X65	9		
	7	Spring Washer 20	9		
	8	Wedge Washer 20	9		
<b>Hardware (Machine &amp; Big Bedplate)</b>					
C (Bedplate Crate)	#	TGD 1	Qty.	TGD2	Qty.
	1	Bolt M16X80	2	Bolt M20X100	4
	2	Spring Washer 16	2	Spring Washer 20	4
	3	Wedge Washer 16	2	Wedge Washer 20	8
	4	Flat Washer 16	2	Flat Washer 20	4
	5	Nut M16	2	Nut M20	4
	6	Bolt M24X120	4		
	7	Spring Washer 24	4		
	8	Wedge Washer 24	4		
	9	Flat Washer 24	4		
	10	Nut M24	4		

## SBLT-SHORT-TGD HARDWARE LIST

Hardware Package Set	#	Item	Quantity		
<b>Hardware (Isolation Pads to Blocking Beam &amp; Isolation Pads to Big Bedplate)</b>					
			6 Isolation Pads		
A (Bedplate Crate)	1	Nut M16	24		
	2	Spring Washer 16	24		
	3	Flat Washer 10	24		
	4	Bolt M16X50	24		
	5	Compress Plate	24		
	6	Bolt M20X65	6		
	7	Spring Washer 20	6		
	8	Wedge Washer 20	6		
<b>Hardware (Machine &amp; Big Bedplate)</b>					
C (Bedplate Crate)	#	TGD 1	Qty.	TGD2	Qty.
	1	Bolt M16X80	2	Bolt M20X100	4
	2	Spring Washer 16	2	Spring Washer 20	4
	3	Wedge Washer 16	2	Wedge Washer 20	8
	4	Flat Washer 16	2	Flat Washer 20	4
	5	Nut M16	2	Nut M20	4
	6	Bolt M24X120	4		
	7	Spring Washer 24	4		
	8	Wedge Washer 24	4		
	9	Flat Washer 24	4		
	10	Nut M24	4		

## SBLT-SHORT-TMGL HARDWARE LIST

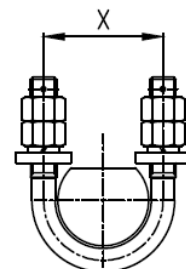
Hardware Package Set	#	Item	Quantity
<b>Hardware (Isolation Pads to Blocking Beam &amp; Isolation Pads to Big Bedplate)</b>			
			6 Isolation Pads
A (Bedplate Crate)	1	Nut M16	24
	2	Spring Washer 16	24
	3	Flat Washer 10	24
	4	Bolt M16X50	24
	5	Compress Plate	24
	6	Bolt M20X65	6
	7	Spring Washer 20	6
	8	Wedge Washer 20	6
<b>Hardware (Machine &amp; Big Bedplate)</b>			
C (Bedplate Crate)	#	TMGL	
	1	Bolt M24X90	4
	2	Spring Washer 24	4
	3	Wedge Washer 24	8
	4	Flat Washer 24	4
	5	Nut 24	4

## DEFLECTOR HARDWARE LIST

<b>Hardware (Machine &amp; Big Bedplate)</b>			
B (Deflector Crate)	1	Nut M20	8
	2	Spring Washer 20	4
	3	Wedge Washer 20	4
	4	Cotter Pin 3.2X50	4
	5	U bolt *	2
	6	Snap Ring *	2

\* The Size of U bolts and snap ring vary based on the shaft diameter of deflector.

<b>Size of U Bolt and Snap Ring for SDSV</b>		
Standard Deflector Part No.	U Bolt Size X	Snap Ring Size
SDSV-TGD1/2/TMGL2A-8X1/2"X520	96	75
SDSV-TGD1/2-6X5/8"X640	112	90
SDSV-TMGL1-8X10mmX400	92	70
SDSV-TMGL2-10X10mmX520	96	75



## RISER (Optional)

Riser is required for some machine system layout. Riser is a small bedplate between the machine and big bedplate.

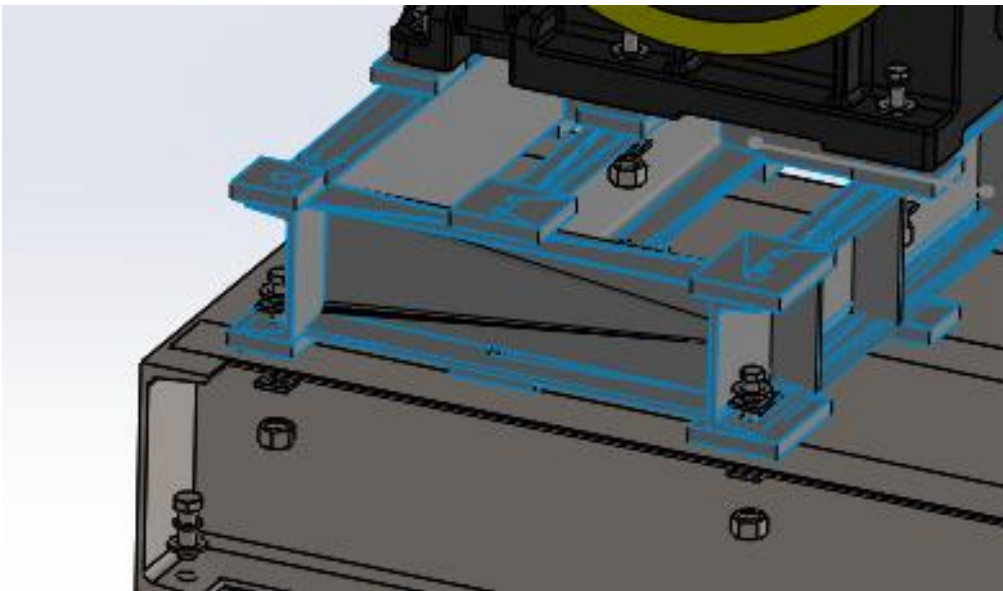
Riser Installation Instruction:

1. **Attach the riser to big bedplate (E).**
2. **Attach machine to riser (D).**

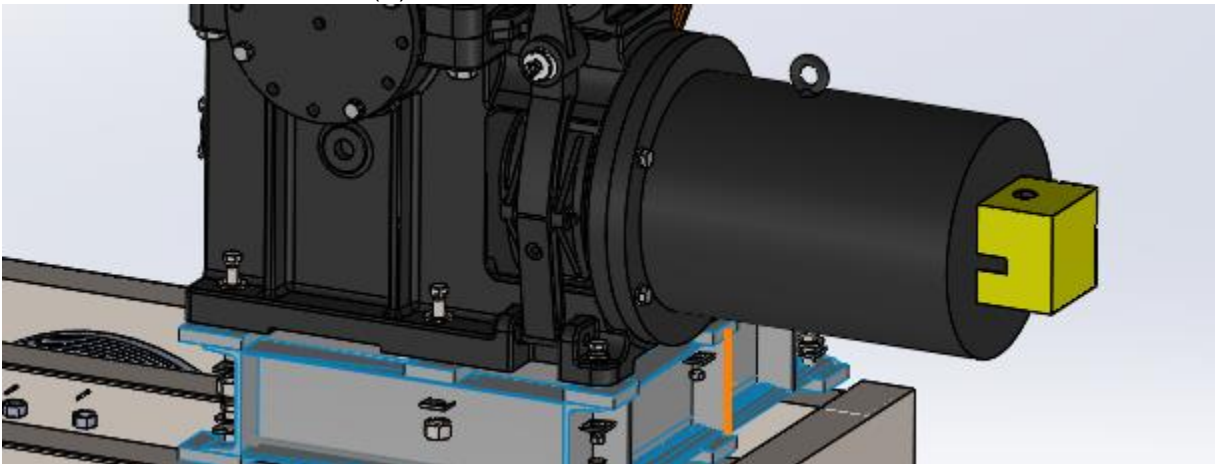
### SBLT-RISER-TGD1

SBLT-Riser-TGD1 has 2 sets of mounting holes which is used for left hand machine and right hand machine, respectively.

- Attach the riser to big bedplate (E)



- Attach the machine to the riser (D)

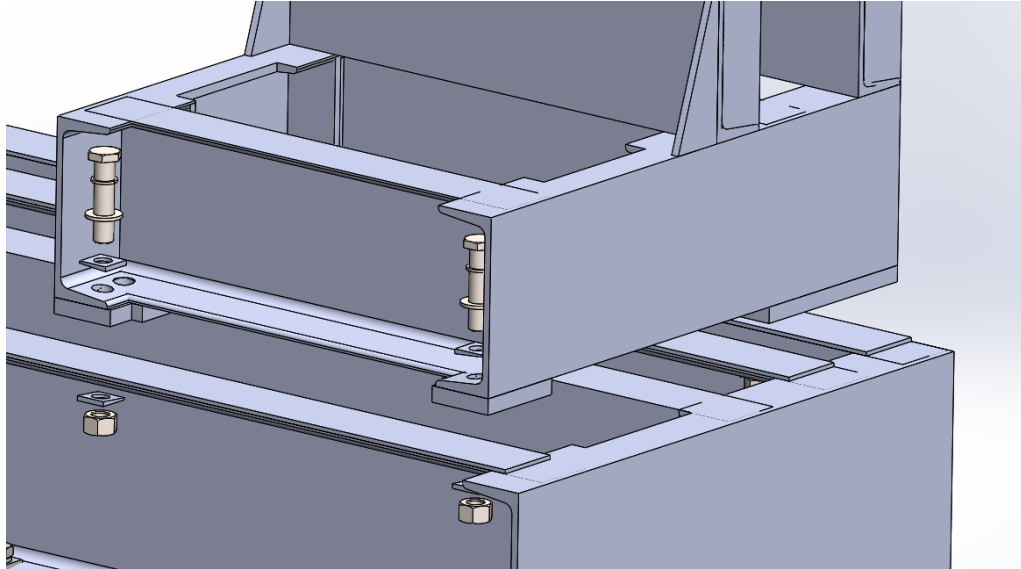


## SBLT-RISER-TGD1 HARDWARE LIST

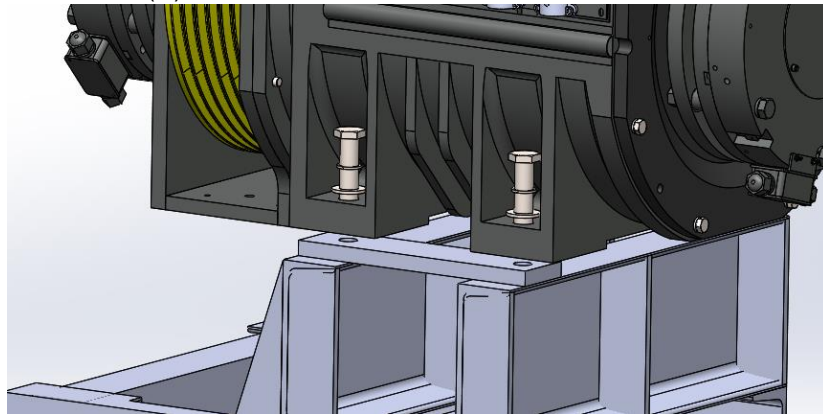
Hardware Package Set	#	Item	Quantity
<b>Hardware (Machine to Riser Bedplate)</b>			
D (Riser Crate)	1	Bolt M16X60	2
	2	Spring Washer 16	2
	3	Flat Washer 16	2
	4	Bolt M24X90	4
	5	Spring Washer 24	4
	6	Flat Washer 24	4
<b>Hardware (Riser to Big Bedplate)</b>			
E (Riser Crate)	1	Bolt M20X100	4
	2	Spring Washer 20	4
	3	Wedge Washer 20	8
	4	Flat Washer 20	4
	5	Nut M20	4

## SBLT-RISER-TMGL

- Attach the riser to big bedplate (E)



- Attach the machine to the riser (D)



### SBLT-RISER-TMGL HARDWARE LIST

Hardware Package Set	#	Item	Quantity
<b>Hardware (Machine to Riser Bedplate)</b>			
D (Riser Crate)	1	Bolt M24X90	4
	2	Spring Washer 24	4
	3	Flat Washer 24	4
<b>Hardware (Riser to Big Bedplate)</b>			
E (Riser Crate)	#	Bolt M24X90	4
	1	Spring Washer 24	4
	2	Wedge Washer 24	8
	4	Flat Washer 24	4
	5	Nut M24	4